

[General]

AutoCheckForUpdates=yes Yes/No: Set to No, to switch off automatic checking for updates.

ExportChCompileTS1TS2=on Set to *No* if you experience a "COM error" at start-up!
 On/Off: When **exporting channels**, CPSProgrammer per default tries to compile consecutive channels with equal callsign and frequency on TS1, TS2 (evtl. FM) into a single CSV line. Up to 3 channels (mixed mode: TS1, TS2, FM) can be compiled into one CSV line.
 Setting *ExportChCompileTS1TS2=off* causes CPSProgrammer to switch off the compiler. Each channel will be saved in a single CSV line, marked as mix=s1 (TS1), mix=s2 (TS2) or as an analogue channel.

MaxLenCallsign=9 **Channelnames** (display names) are generated by concatenation of "**callsign**"+"space"+"NET-delimiter"+"CallExt1/2".
 MaxLenCallsign defines the maximum number of characters allowed for the **callsign**. Callsigns exceeding that number are cut off.
 This parameter only applies, if any of NET-delimiter or CallExt1/2 is used. If both are empty, no length checking is applied.

ShowStatusBarInfo=on On/Off: Switch on or off additional status bar information:

1.3 s	0.255 s	select scanlist
-------	---------	-----------------

 total time / time per channel, list, zone / current interaction with CPS

TXfmax=440 Upper band limit [full MHz]. TX frequencies above will generate a warning. Set this value to your regional band limits.

TXfmin=430 Lower band limit [full MHz]: TX frequencies below will generate a warning. Set this value to your regional band limits.

TXfmaxVFO2 =146 Dual band frequency range 2 upper band limit [full MHz]. TX frequencies above will generate a warning. Set this value to your regional band limits.

TXfminVFO2=144 Dual band frequency range 2 lower band limit [full MHz]: TX frequencies below will generate a warning. Set this value to your regional band limits.

LastUsedQTH=*Locator* Stores the last used locator from "convert FM-repeater list", e.g. JN58RD

LastUsedCPS=*CPS* Stores the last selected CPS, e.g. CS700, DM380, RT3, ...

UseLastCSV=yes Yes / No: To propose the latest used files, when program starts and save at exit.

channelsCSV=*Drive/path/file.CSV* Last used channels CSV

scanlistCSV=*Drive/path/file.CSV* Last used scanlist CSV

zonelistCSV=*Drive/path/file.CSV* Last used zonelist CSV

roaminglistCSV=*Drive/path/file.CSV* Last used roaminglist CSV

fmrepeaterlistCSV=*Drive/path/file.TXT* Last used FM-repeaterlist (TXT/CSV) to be imported.

[NetDelimiter]

netname=value Name of the net and delimiter, e.g. dmr-plus=#

The delimiter signals the used network to the radio operator and additionally avoids double names, in case a repeater callsign occurs twice in the channel list (provided it is connected to different networks)

MixedFM=%FM

MixedFM defines the delimiter, appended at the call of a mixed-mode FM-repeater at its analogue channel, e.g. DO0JG %FM

[Convert]

RXGroupCSV=*Drive/path/file.CSV*
channelsCSV=*Drive/path/file.CSV*
contactsCSV=*Drive/path/file.CSV*
scanlistCSV=*Drive/path/file.CSV*
zonesCSV=*Drive/path/file.CSV*

Last used rxgroups CSV
Last used channels CSV
Last used Digital User Contacts CSV (datadump.cgi)
Last used scanlist CSV
Last used zonelist CSV

LastUsedTarget=AT-D868UV

Last used target format for conversion

[AT-D868UV]

Radio-ID=My Radio ID
DMRAdmitCriteria=Same Color Code
PrivateCallConfirmed=unchecked
UserListHighlight=callsign

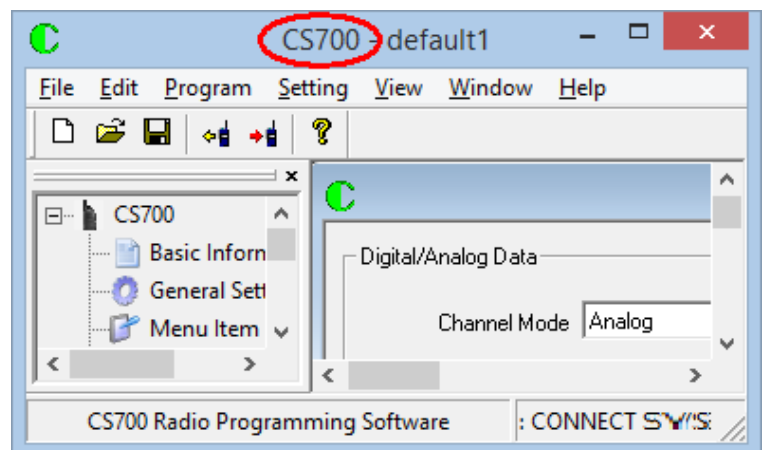
TXPermit
Call Confirmation: set to unchecked/check
DigitalUserList: set to callsign/name, defines if callsign or name is displayed in large font:



[CS700]

WindowTitle=CS700

Title of the CPS Window (constant part only)
Windows-title of the CS700 CPS:



TOT=360

TX Time out timer: Global setting for all channels. Must be a valid number or "Infinite"

TOT_FM=360

TX Time out timer: Global setting for all FM channels. Must be a valid number or "Infinite". Default value is taken from TOT

DMRAdmitCriteria=Color Code

Always / Color Code / Channel Free: Global setting for all channels.

PrivateCallConfirmed=UnCheck Check / UnCheck: Global setting for all channels.

[CS750]

WindowTitle=Customer Programming Software Title of the CPS Window (constant part only)
AnalogChWriteDelay=20 Write-Delay for analog channel name. Increase number, if you observe errors in writing the channel name.
TOT=360 TX Time out timer: Global setting for all channels. Must be a valid number or "Infinite"
TOT_FM=360 TX Time out timer: Global setting for all FM channels. Must be a valid number or "Infinite". Default value is taken from TOT
TOT_PreAlert=3 Alert time in seconds, before timeout (TOT). Set to 0, 1 .. 10
TXAdmit=Color Code Free Always / Color Code Free / Channel Idle
TXAdmitFM=Always Allow Never Allow / Always Allow / Channel Free / CTCSS/CDCSS Locked / Audio:
PrivateCallConfirmed=Check Check / UnCheck

[HD1]

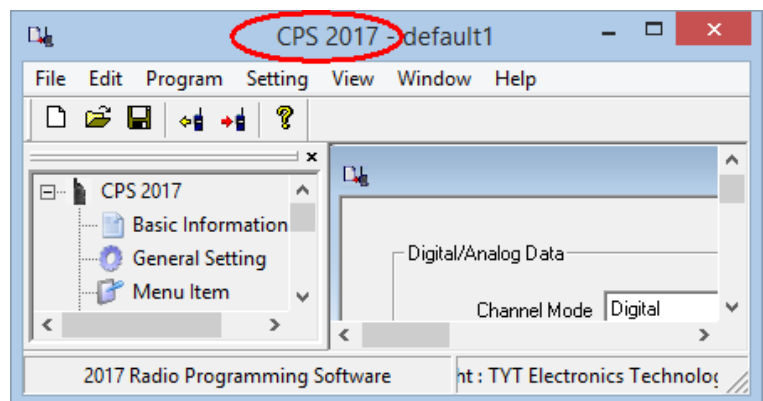
WindowTitle=Channel Information Title of the CPS Window (constant part only)

[MD380]

WindowTitle= MD380 Title of the CPS Window (constant part only): for MD 380
WindowTitle=CPS MD-390 for MD 390
see [CS700] above for all options ...

[MD2017]

WindowTitle=CPS 2017 Title of the CPS Window (constant part only)
Windows-title of the MD 2017 CPS:



InCallCriteria=always Set to: Always / Follow Admit Criteria / TX Interrupt
GPSSystem=1 None, or number
SendGPSInfo=check Checkbox Send GPS Info: check to activate, or uncheck to deactivate
ReceiveGPSInfo=check Checkbox Receive GPS Info: check to activate, or uncheck to deactivate

[PD365]

WindowTitle=Hytera Customer Programming Software Title of the CPS Window (constant part only)
TOT=360 TX Time out timer: Global setting for all channels. Must

TOT_FM=360	be a valid number or "Infinite" TX Time out timer: Global setting for all FM channels. Must be a valid number or "Infinite". Default value is taken from TOT
TOT_PreAlert=5	Alert time in seconds, before timeout (TOT). Set to 0, 1 .. 10
PrivateCallConfirmed=check	Check / UnCheck
TXAdmit=Color Code Free	Always / Channel Free / Color Code Free
TXAdmitFM=Always Allow	Always Allow / Channel Free / CTCSS/CDCSS Correct / CTCSS/CDCSS Incorrect

[PD785]

WindowTitle=Customer Programming Software	Title of the CPS Window (constant part only)
TOT=360	TX Time out timer: Global setting for all channels. Must be a valid number or "Infinite"
TOT_FM=360	TX Time out timer: Global setting for all FM channels. Must be a valid number or "Infinite". Default value is taken from TOT
TOT_PreAlert=5	Alert time in seconds, before timeot (TOT). Set to 0, 1 .. 10
GPSRevertChannel=Selected	Selected / None / <i>Channel Name</i> : Global setting for all channels
IPMultiSiteConnect=check	Check / UnCheck
PhoneSystem= <i>PhoneSystemName</i>	None / <i>PhoneSystemName</i> : Used to switch on DTMF keyboard
PrivateCallConfirmed=check	Check / UnCheck
RSSRevertChannel=None	Selected / None / <i>Channel Name</i> : Global setting for all channels.
SignallingType=None	None / <i>SignallingName</i> : Used to switch on 1750 Hz tone call at FM.
TXAdmit=Color Code Free	Always / Channel Free / Color Code Free
TXAdmitFM=Always Allow	Always Allow / Channel Free / CTCSS/CDCSS Correct / CTCSS/CDCSS Incorrect

[RT3]

WindowTitle=CPS RT3	Titel of the CPS Window (constant part only)
<i>see [CS700] above for all options ...</i>	